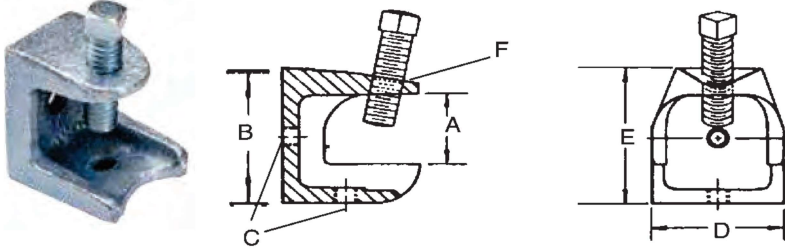


Beam Clamps • Profil Mengenesi

Malleable Iron • Pik Döküm



Features

- Suitable for support of up to 600 lbs.
- Malleable iron body will not distort or slip when tightened

Applications

- Supports threaded rod, threaded bridle rings and electrical boxes

Standard Material

- Malleable iron

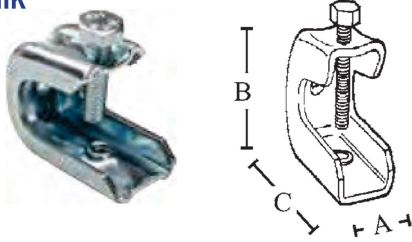
Standard Finish

- Zinc plated

Catalog Number	Size	Dimensions (in)					
		A	B	C	D	E	F
E-L 286	1"	.87	1.56	1/4-20	1.25	1.06	5/16-18
E-L 287	1 1/2"	.87	1.75	5/16-18	1.62	1.50	3/8-16
E-L 288	2"	.93	2.00	3/8-16	2.00	2.00	1/2-13
E-L 289	2 1/2"	.93	2.50	1/2-13	2.50	2.50	5/8-11

Beam Clamps • Profil Mengenesi

Steel • Çelik



Features

- Single screw, 2 hole assembly

Applications

- Supports threaded rod, threaded bridle rings and electrical boxes
- Can replace pipe clamps on exposed metal
- Supports 50 to 100 lbs.

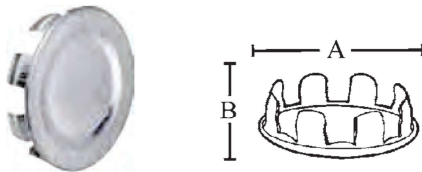
Standard Material

- Steel

Catalog Number	Jaw Opening	Trapping	Load Capacity	Ship Case	Weight/Case	Dimensions (in)			Tighten Torque
						A	B	C	
E-L 285	1"	3/8" - 16	100 Lbs.	100	20	1.210	2.062	2.250	125

Knockout Seals • Kör Tapa - Patlatmalı Delik İçin

Steel • Çelik



Features

- Easily installs into unused box knockouts

Applications

- Provides a safe barrier for the protection of exposed wires
- Suitable for standard, airtight and dust tight applications

Standard Material

- Steel

Catalog Number	Size	Unit Carton	Ship Case	Weight/Case	Dimensions (in)	
					A	B
E-LT 199-1	1/2"	100	1000	10	1.07	.37
E-LT 199-2	3/4"	100	1000	20	1.24	.31
E-LT 199-3	1"	50	500	9	1.48	.34
E-LT 199-4	1-1/4"	50	500	10	1.80	.31
E-LT 199-5	1-1/2"	50	500	20	2.22	.37
E-LT 199-6	2"	10	100	5	2.68	.36